



Last update: March 2020

PRODUCT ROADMAP

Database Activity Monitoring

DAM



Disclaimer

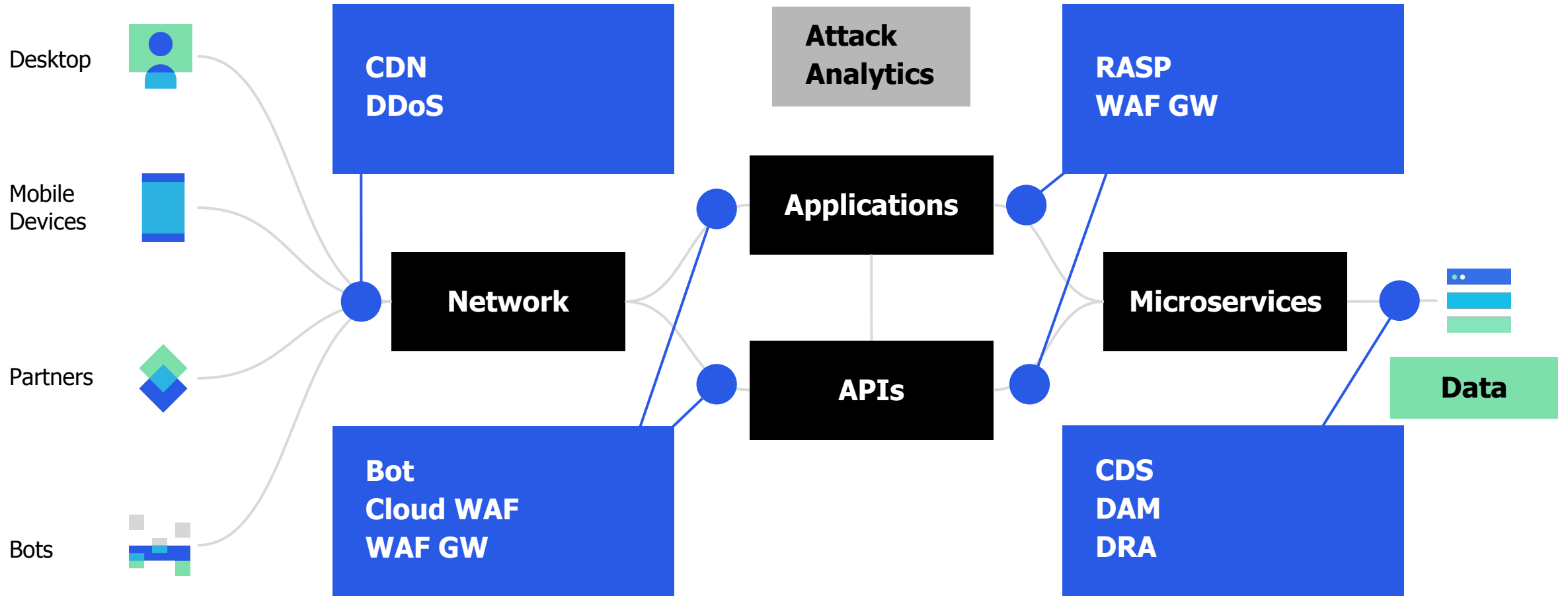
This presentation is being provided for INFORMATIONAL PURPOSES ONLY. The information provided represents Imperva's expectations as of the date the presentation was prepared. Imperva undertakes no obligation to update or revise this information. The information should not be construed as a commitment to deliver any specific upgrade or feature or functionality.

Imperva may change the contents of the presentation in its sole discretion at any time. You should not rely on the anticipated timelines or potential upgrades, features or functionality described in the presentation when making a decision to purchase products from Imperva.

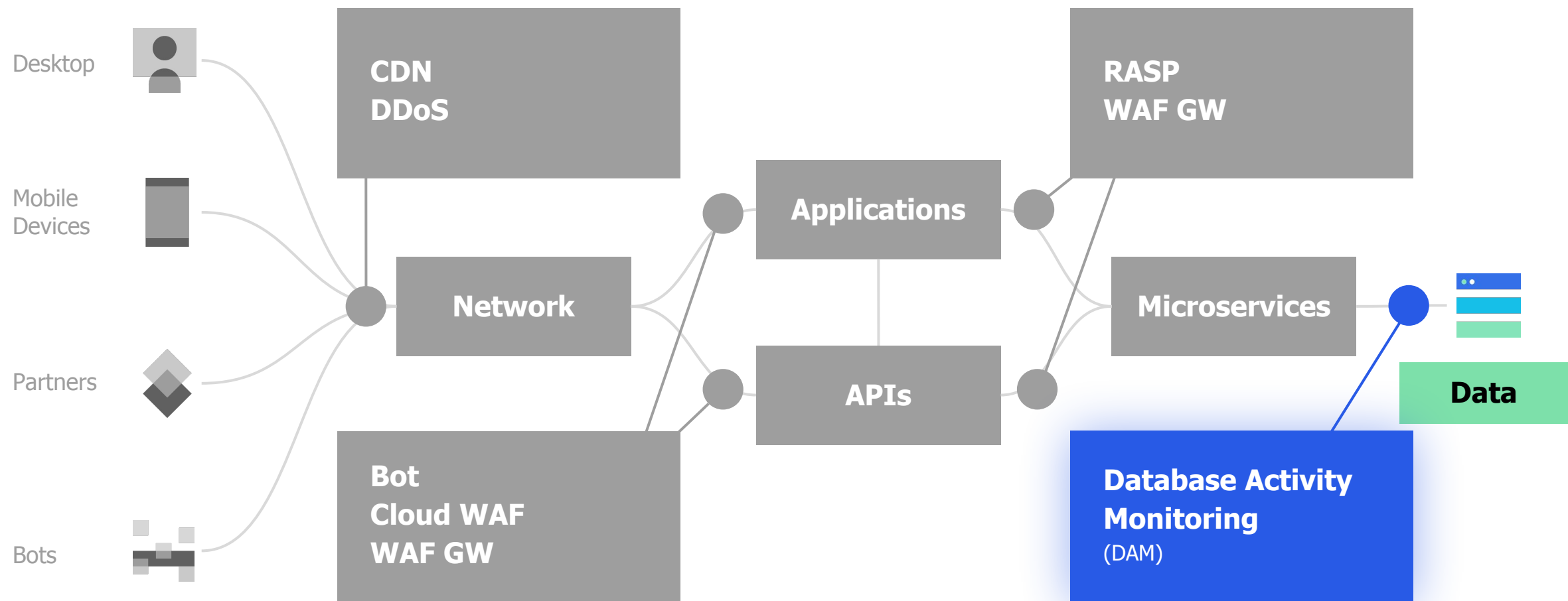


**Imperva
protects data
and all paths to it**

The Imperva Products Portfolio



Database Activity Monitoring



Data Protection Challenges

Lack of Visibility



Don't know where sensitive data is or if **breached**

Takes only 1



Careless, compromised or **malicious** user

Lack of skilled professionals



Turnover, **overloaded** staff

206 days

on average before breaches are discovered

Statistics from Black Hat USA's 2019 research report

52%

of employees see no security risk to share their passwords

90%

believe shortage affects security of data

Customer Business Outcomes

Reduce Cost of Compliance

Simplify & standardize
Avoid non-compliance

Mitigate Security Risk

Visibility
Detection & rapid response

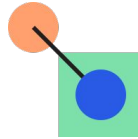
Enable Digital Transformation

Cloud, hybrid, multi-cloud
Avoid compliance or security gaps



DAM Focus Areas

**Deliver
Frequently**



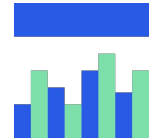
**Reduce Deployment
TCO**



**Expand OS &
DB Coverage**



**Reporting for Audit,
Risk and Forensics**



DAM Looking Forward

Agility	Public facing coverage tool		Agents monthly releases	DB connect platform
Reduce Deployment TCO		User space agent		Large scale MX, GW optimization, Agent deployment, Azure clustering
Reports/LSAR	Community based reporting			Risk, Forensics and compliance reports
DB Coverage		New DBs - Sailfish, Mongo DB Atlas Couchbase		Assessments for big data, entitlement reports, GCP support
Mandates				JAVA upgrade
	Q1	Q2	+6 months	

Large Scale Audit & Reporting

Persona based dashboards

reports for security personas

Hunt & explore

opportunities to reduce the attack surface

Out of the box solution

for compliance reporting

Operational reporting

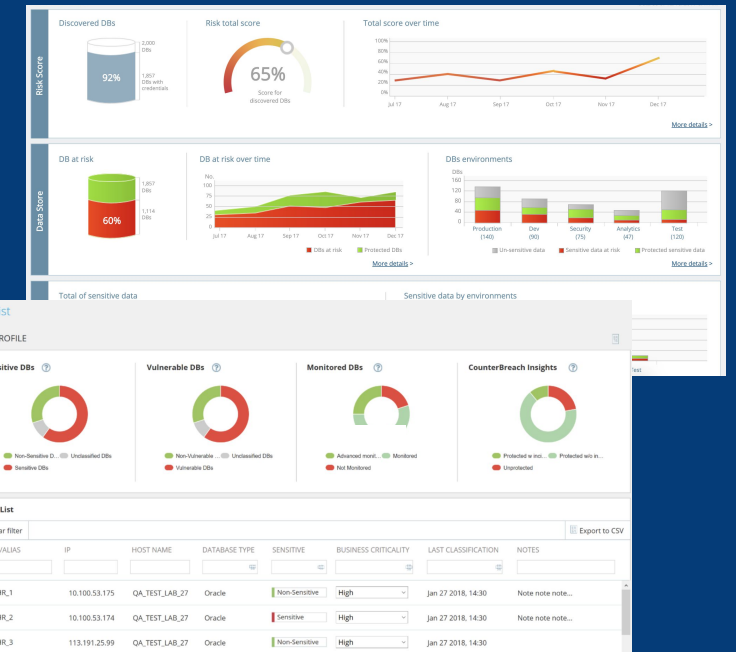
for discovery, classification, assessments

Self-serve reporting

and dashboarding

Single pane of Glass

including DRA and CDS



Deployment Effort in Large Environments

40%

**Fewer agent
upgrades**

User space agents

100

**Agent deployments
in 1 hour!**

Leverage Puppet /
Chef for agent
deployments

20%

**Fewer
Gateways**

Optimized GW
performance

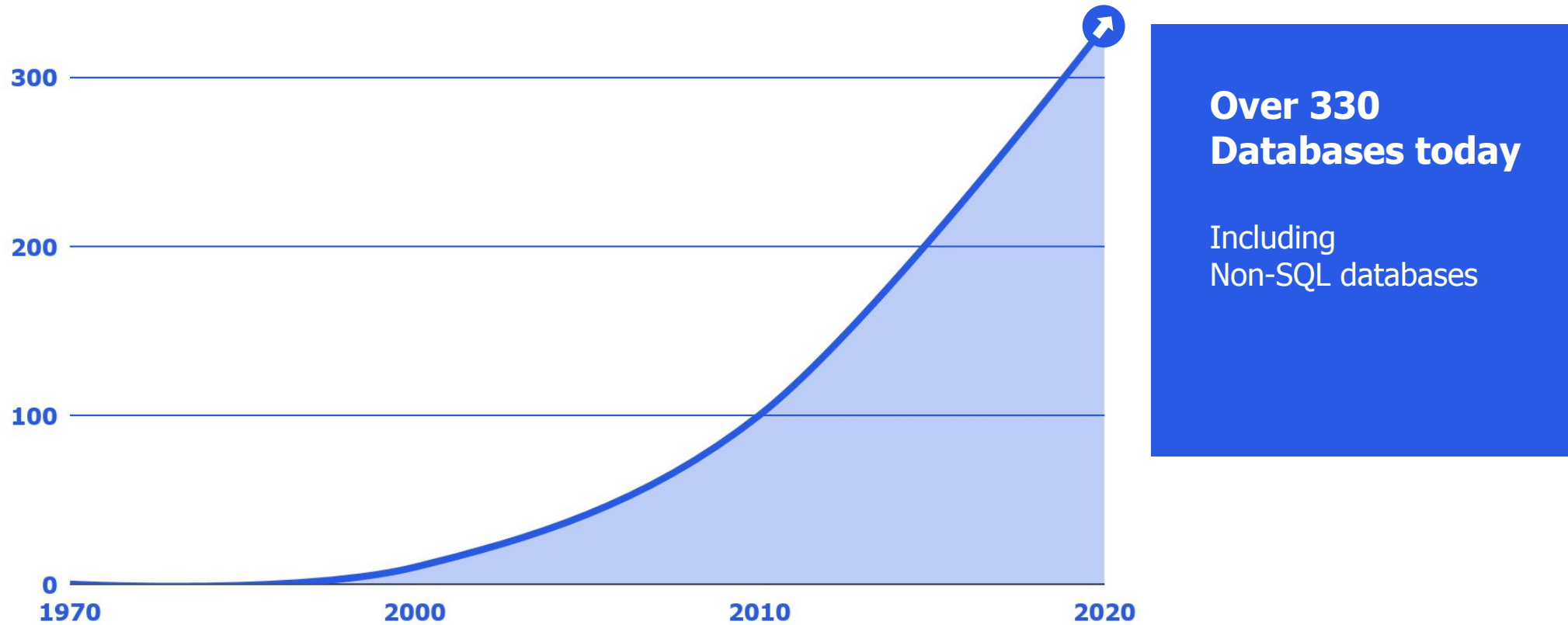
50-70%

**Fewer
MXs**

Support more GWs on
each MX

Evolution of Databases

Supporting the long tail of databases became a mission impossible

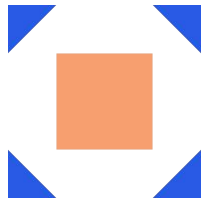


Imperva DB Connect

Solving the long tail of databases

Ability to extend DAM

with additional DBs that aren't supported out of the box



Can be added by Professional Services



Includes the ability to configure:

Data Collection Discovery
Assessments

Classification

DRA

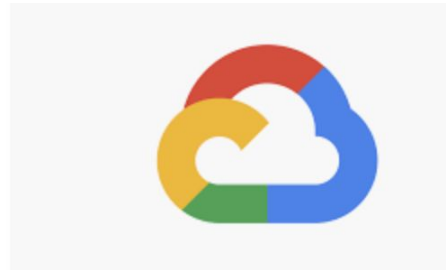
DAM Hybrid Cloud Solution

Adding Databases

MySQL on Amazon RDS / Aurora



Supporting GCP Clusters



Supporting Azure Clusters



Database Activity Monitoring

Automation to drive Agility and Quality

Full Coverage

of OS/DB supported permutations

Full Coverage

for agent functionality

Testing Beta

OS/DB versions

Coverage Tool Webpage

will reflect supported versions

Data Security Coverage Tool

Home > Data Security Coverage Tool

Data Security Coverage Tool

Imperva Data Security Coverage Tool represents all certified supported combinations of databases and operating systems.

GET THE REPORT

— Database (67)

NAME	VERSION
Cloudera Hadoop (CDH)	6.2 6.1 6.0 5.16 5.15 5.14 5.13 5.12 5.11
Datastax Cassandra	6.7 6.0 5.1
Hortonworks Hadoop (HDP)	3.1 3.0 2.6

Extending DAM & DAS DB Coverage

Log collection for:

Couchbase

MongoDB Atlas

IBM Integrated Analytics System

Aurora MySQL, RDS MySQL

Snowflake

Big Data DAS support :

CIS

Hadoop 2.6

CIS MongoDB 3.6

CIS Cassandra 3.11



Couchbase



MongoDB



IBM Integrated
Analytics System



Hadoop



MongoDB

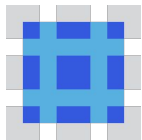


Cassandra

Mainframe Agent

Larger Server Cluster Support

Allow a single z/OS Agent to connect to multiple GW's by sending each SSID (Db2, IMS, or FAM) across its own Data Channel



Improve Efficiency

Manage MFA Agent Active Monitoring Policy by APIs

Manage MFA Agent Monitoring Rules

Improve RegEx support for file activity



Risk Analytics

Data Risk Analytics

Capture user level activities from CICS for file activity events



Thank You!

